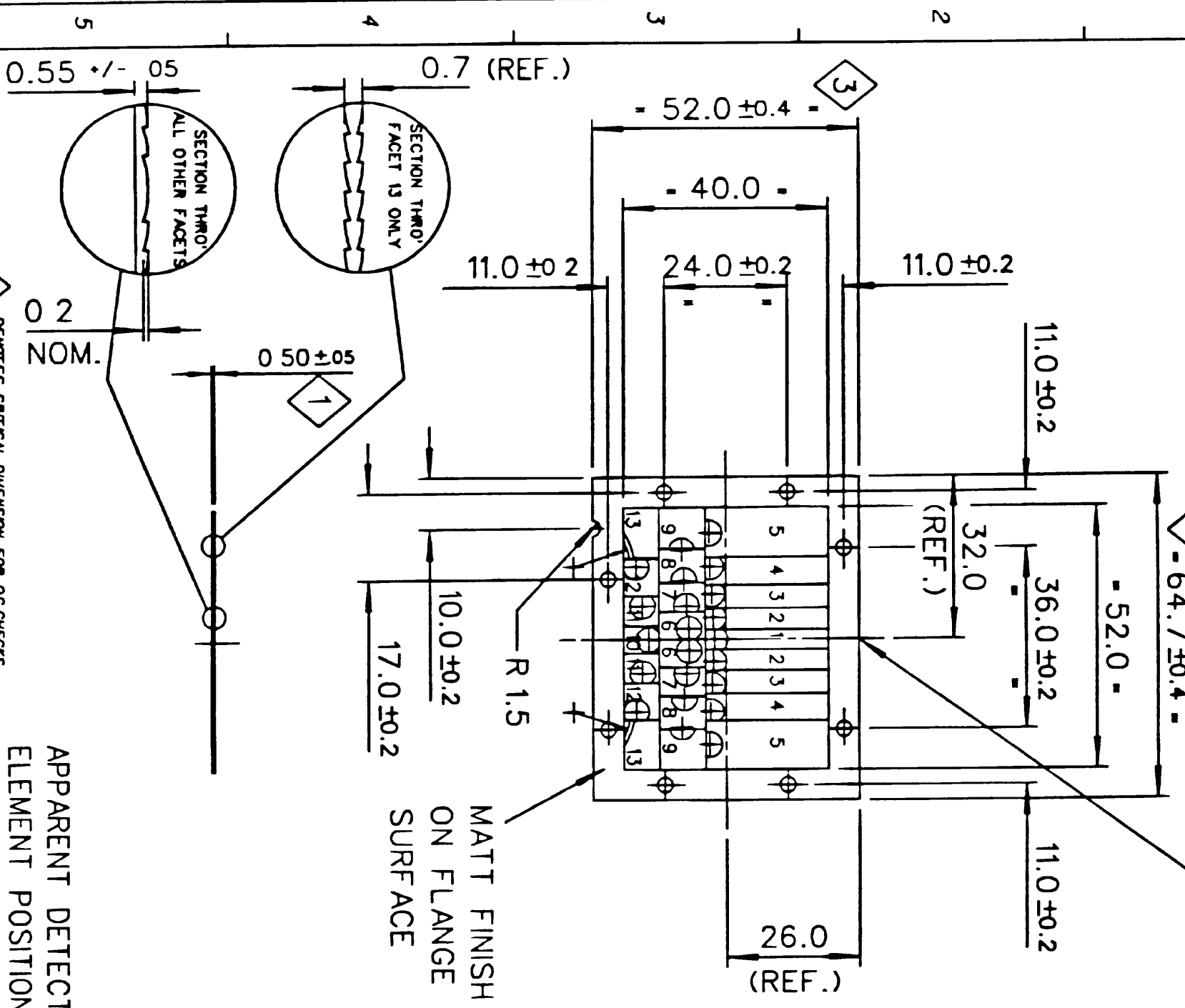


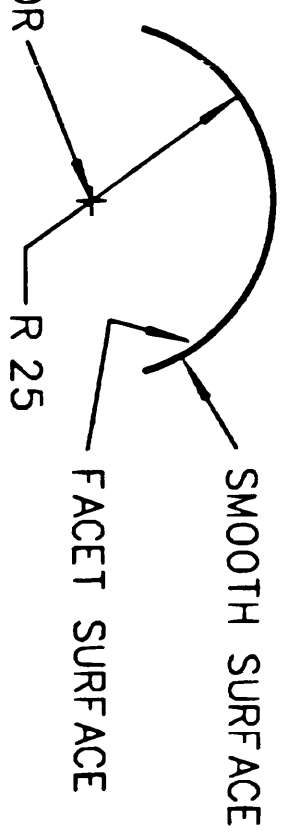
NOTES:

GATE SCAR WITHIN +/- 0.2 OF EDGE

1. MATERIAL. HIGH DENSITY POLYETHENE (SEE MAPICS COMPUTER DESCRIPTION FOR COLOUR ETC.)
2. MOUNTED CURVED WITH TOP SURFACE OF LENS 25mm FROM APPARENT DETECTOR ELEMENT POSITION (SEE DIAGRAM BELOW)
3. STANDARD MOUNTING HEIGHT 2.0m
4. NOMINAL RANGES:-
 - 12m ● 5 DEG DOWN ANGLE (9 ZONES)
 - 8m ● 16 DEG DOWN ANGLE (8 ZONES)
 - 4m ● 31 DEG DOWN ANGLE (5 ZONES)
 - 12m ● 50 DEG DOWN ANGLE (2 ZONES)
5. THIS DRG IS THE PROPERTY OF COMBINED OPTICAL INDUSTRIES LTD AND MUST NOT BE COPIED OR DISCLOSED IN ANY WAY WHATSOEVER TO ANY THIRD PARTY WITHOUT THE WRITTEN PERMISSION OF COMBINED OPTICAL INDUSTRIES LTD.



PART No	DESCRIPTION
5909	NATURAL - AS DRAWN
5909/01	AS DRAWN BUT NO FIXING HOLES
5909-W	WHITE - AS DRAWN
5909/01-W	WHITE, AS DRAWN BUT NO FIXING HOLES
5909-B	BLACK - AS DRAWN
5909/01-B	BLACK, AS DRAWN BUT NO FIXING HOLES
5909-WX	WHITE BULK PACKED



APPARENT DETECTOR ELEMENT POSITION

INTERGRAPH DENOTES CRITICAL DIMENSION FOR QC CHECKS (NUMBER INDICATES PRIORITY) - ALL OTHER DIMENSIONS ARE FOR TOOLMAKERS REF. ONLY

©1995 Combined Optical Industries Ltd ALL DIMENSIONS IN mm

ISSUE	DATE	ECN No.	MODIFICATIONS
7	10/8/93	07/83/187	REDRAWN TABLE ADDED
8	28/1/94		PART No 5909-WX ADDED TO SCHEDULE
9	28/9/94	08/94/310	THICKNESS WAS 0.53'
10	22/1/97	07/96/458	ONE NUMBER WAS 1.57 -> 1.49 FACT NUMBER WAS 04 0871
11	17/2/99	5/99/1594	DM 64.7 WAS 64.0

RELEASED FOR MANUFACTURE

DATE: 17-2-99

SIGNED: [Signature]

COMBINED OPTICAL INDUSTRIES
BATH RD, SLOUGH, ENGLAND
Tel: (0753) 575011

CUSTOMER:
TITLE:
POLYFRESNEL PF24B

DRW	RJL	26.5.93	SCALE, 1:1
CHK'D	[Signature]	17-2-99	COIL PART No
APP'D	[Signature]	17-2-99	SEE TABLE

TOLERANCES UNLESS STATED
 0 DECIMAL PLACE +/-0.5
 1 DECIMAL PLACE +/-0.25
 2 DECIMAL PLACES +/-0.05

CAD FILE: \DGN\60085SH2.DGN

DWG No: A3-60085 SH.2/2