


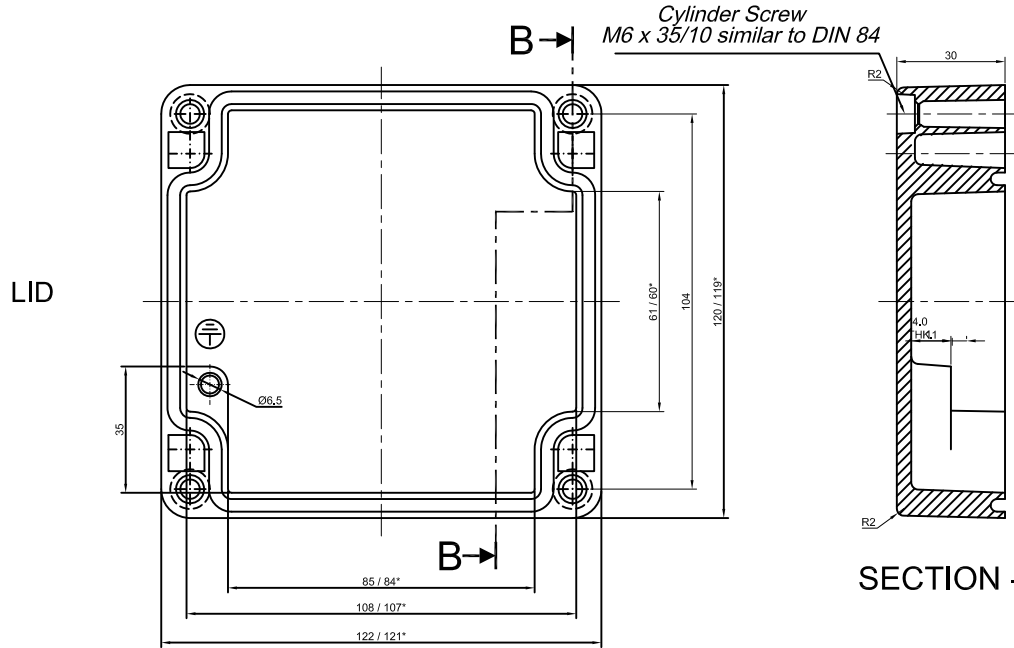
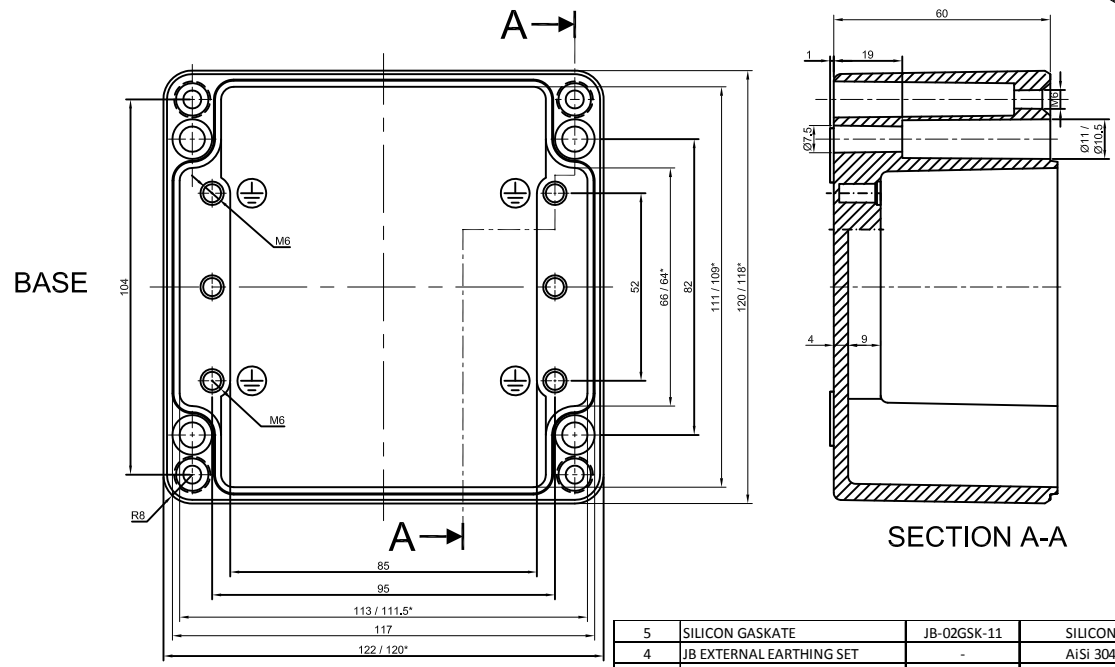
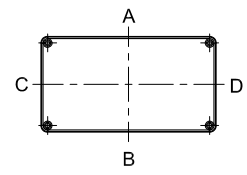
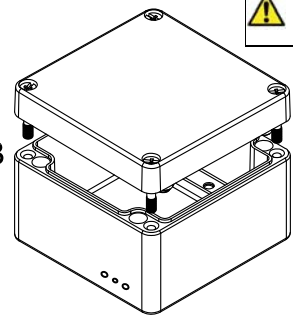


**GENERAL SPECIFICATION AND AREA CLASSIFICATION:**

- MATERIAL COMPOSITION - AISI 12
  - DEGREE OF PROTECTION IP66 AS PER IEC 60529 : 1989 +A1 : 2000
  - SERVICE TEMPERATURE RANGE : - 50 °C to +135 °C
  - ALL DIMENSIONS ARE IN mm. UNLESS STATED OTHERWISE.
  - SURFACE WILL PLAIN FINISH OR POWDER COATED.(RAL-7001)
  - THE JUNCTION BOX WILL BE MARKED WITH
  -  II 2 G Ex e IIC Gb  
 II 2 D Ex tb III C Db IP 66  
**0539**  
 DEMKO 13 ATEX 1327771U  
 IECEx UL 13.0042U
  - TRADE MARK 
- ⚠ NOT TO BE REVISED WITHOUT NOTIFICATION TO THE ExCB/NOTIFIED BODY**



SECTION -B-B



SECTION A-A

Opening Detail (Size)	NO OF HOLES SIDE A/B	Min. Distance between the opening for Side A/B (mm)	NO OF HOLES SIDE C/D	Min. Distance between the opening for Side C/D (mm)	Opening Detail (Size) PG	NO OF HOLES SIDE A/B	Min. Distance between the opening for Side A/B (mm)	NO OF HOLES SIDE C/D	Min. Distance between the opening for Side C/D (mm)	Min. Distance of last opening from the enclosure end on side A/B (mm)	Min. Distance of last opening from the enclosure end on side C/D (mm)
M12	5	12	4	11	Pg.7	5	12	4	11	21	29
M16	5	12	4	11	Pg.9	5	12	4	11	21	29
M20	5	10	3	9	Pg.11	5	10	4	8	21	30
M25	2	15	1	-	Pg.13.5	4	10	3	9	22	33
M32	2	18	1	-	Pg.16	3	10	2	12	20	33
M40	-	-	-	-	Pg.21	2	21	2	11	22	27
M50	-	-	-	-	Pg.29	2	13	1	-	21	33
M63	-	-	-	-	Pg.36	-	-	-	-	-	-
-	-	-	-	-	Pg.42	-	-	-	-	-	-
-	-	-	-	-	Pg.48	-	-	-	-	-	-

SR.NO.	PART NAME	DRAWING NO.	MATERIAL	QTY
5	SILICON GASKATE	JB-02GSK-11	SILICON	1
4	JB EXTERNAL EARTHING SET	-	AISI 304	1
3	LID MOUNTING SCREW	M6 JB-SCR-LD-00	AISI 304	4
2	JB-EARTHING SCREW	-	MS COPPER PLATED	2
1	JUNCTION BOX Ex-122 x 120 x 91	Ex-12212091	AISI 12	1

QUANTITY 1

MATERIAL :- **AISI 12 DIN230**

MACH.NAME -

DATE 17/02/14

SIGN

NAME

TITLE :- JUNCTION BOX 122 x 120 x 91

DATE 17/02/14

RRPL DESIGN

MANOJ DRAWN

G.K. CHECKED

J.B. APPROVED

SCALE PARTNO. 0

REV 0 DRG. NO. Ex-AJB-12212091

WEIGHT: FINISH: NATURAL

TOLERANCE ±0.2 DIMENSIONS ±0.2 HOLES ±1.0° ANGLES

ALL DIMENSION ARE IN MM

RJ 22

Raychem RPG (P) Limited  
 Ceat Mahal Annexe,  
 Dr. Annie Besant Road,  
 Worli, Mumbai 400030  
 Web: www.raychemrpg.com

PROPERTY OF RaychemRPG (P) LTD.  
 ALL RIGHTS RESERVED AND/OR PHOTOCOPYING THIS DOCUMENT  
 TO A PERSON WITHOUT RaychemRPG (P) LTD. WRITTEN AUTHORIZATION IS PROHIBITED

B.O.M.