

GENERAL SPECIFICATION AND AREA CLASSIFICATION:

1. MATERIAL COMPOSITION - AISI 12
2. DEGREE OF PROTECTION IP66 AS PER IEC 60529 : 1989 +A1 : 2000
3. SERVICE TEMPERATURE RANGE : - 50 °C to +135 °C
4. ALL DIMENSIONS ARE IN mm. UNLESS STATED OTHERWISE.
5. SURFACE WILL PLAIN FINISH OR POWDER COATED.(RAL-7001)
6. THE JUNCTION BOX WILL BE MARKED WITH

7. II 2 G Ex e IIC Gb



II 2 D Ex tb IIC Db IP 66

0539

DEMKO 13 ATEX 1327771U
IECEx UL 13.0042U

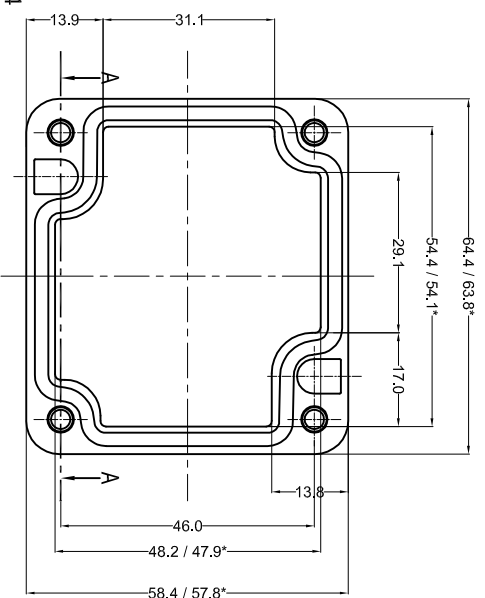
8. TRADE MARK



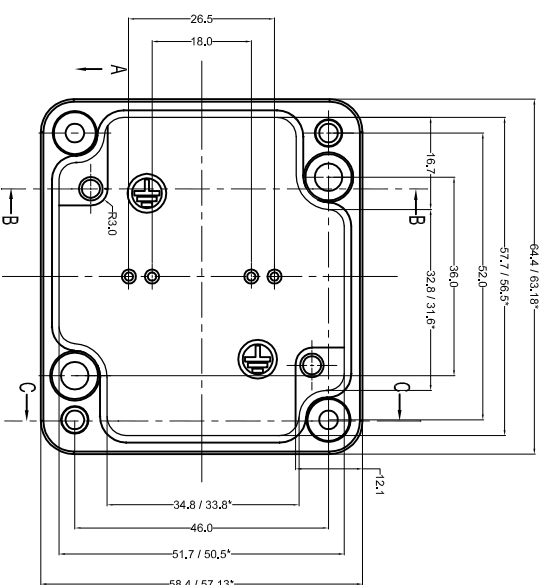
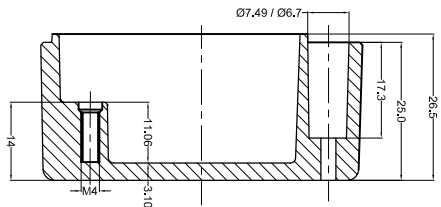
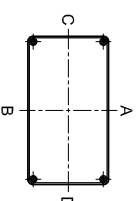
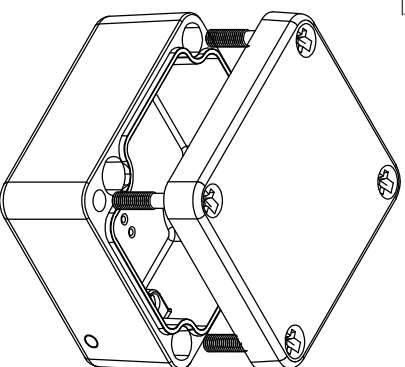
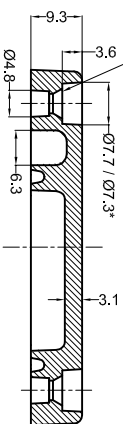
⚠ NOT TO BE REVISED WITHOUT NOTIFICATION TO THE EXCERNIFIED BODY

LID

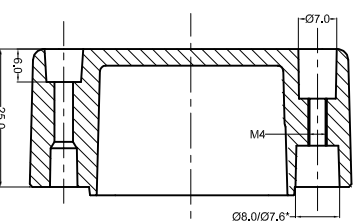
Cylinder Screw
M4 x 20/7 similar to DIN 84



SECTION A-A



SECTION C-C



BASE

SER. NO.	PART NAME	MATERIAL	QTY
5	SILICON CASKATE	SILICON	1
4	IB EXTERNAL FASTENING SET	ALSI 304	1
3	LID MOUNTING SCREW	ALSI 304	4
2	IB FASTENING SCREW	M5 COPPER PLATED	2
1	JUNCTION BOX EX-58 X 64 X 34	ALSI 12	1

QTY	NO OF HOLES SIDE A/B	Min. Distance between the opening SIDE A/B (mm)	NO OF HOLES C/D	Min. Distance between the opening C/D (mm)	Opening Detail (Size) PG	NO OF HOLES SIDE A/B	Min. Distance between the opening SIDE A/B (mm)	NO OF HOLES C/D	Min. Distance between the opening C/D (mm)	Min. Distance of last opening from the enclosure end on side A/B (mm)	Min. Distance of last opening from the enclosure end on side C/D (mm)
M12	2	7	1	1	Pg.7	2	6	1	1	13	20
M16	-	-	-	-	Pg.9	1	-	1	-	16	21
M20	-	-	-	-	Pg.11	-	-	-	-	-	-
M25	-	-	-	-	Pg.13.5	-	-	-	-	-	-
M32	-	-	-	-	Pg.16	-	-	-	-	-	-
M40	-	-	-	-	Pg.21	-	-	-	-	-	-
M50	-	-	-	-	Pg.29	-	-	-	-	-	-
M63	-	-	-	-	Pg.36	-	-	-	-	-	-
-	-	-	-	-	Pg.42	-	-	-	-	-	-
-	-	-	-	-	Pg.48	-	-	-	-	-	-

TOLERANCE	WEIGHT	FINISH	MATERIAL	DATE	SIGN	NAME
±0.2 DIMENSIONS ±0.2 HOLES	NATURAL	NATURAL	AISI 12 DIN230	17/2/14		MANOJ DRAVNI
±1/10° ANGLES	ALL DIMENSION ARE IN MM			17/02/14		APPROVED

TITLE :- JUNCTION BOX
58 X 64 X 34

MACH NAME

RAYCHEM RPPG (P) LIMITED
C-61, Main Road,
D-1, Amie Bessant Road,
Worli, Mumbai 400030
Web : www.raychemrppg.com

SCALE PARTNO. 0

EX-AJB-586434